

# THE OTTER

THE NEWSLETTER OF OTTERBOURNE CHURCH OF ENGLAND PRIMARY SCHOOL.



## THIS WEEK'S NEWSLETTER INCLUDES MORE IMPORTANT UPDATES ABOUT THE MAY FAYRE, WHICH IS THIS SATURDAY.

Dear Families

On Friday, all of the children joined in with the national celebration of David Attenborough's 100<sup>th</sup> birthday. Lead by the amazing Mrs Simmons (aka Mrs Science), the day was designed to help the children learn more about bio-diversity, nature and its place in different biomes, and how important it is that we continue to care for our planet.

The day started with a whole school assembly, where the children were introduced to some of David's great work over many decades. Throughout the day, the children were supported to really focus on the learning power of 'noticing' as they studied patterns in nature and participated in a range of fun and engaging activities. It was a great day in the school, and I hope that the children came home and shared the excitement we saw from them.



For this special day, Mrs Simmons created a David Attenborough inspired museum in the library for the children to explore...

...but she never told us about the day she met the **man** himself!



During the day, the children continued with their longitudinal studies and took time to 'Notice' as if they were David Attenborough. They made viewfinders to look closer at nature than they had ever looked before and were able to notice things such as fine hairs on leaves, cracks within bark or a tiny moth resting on a petal.

# THE OTTER

THE NEWSLETTER OF OTTERBOURNE CHURCH OF ENGLAND PRIMARY SCHOOL.



Mrs Simpson has been working hard with some of the children to create our Spirited Arts competition entry which is collaborative mural celebrating nature and creativity to which the whole school will contribute in some way. It mimics the biomes created by the children's artefacts that were brought in as part of the outdoor learning day on David Attenborough's 100th birthday. This is being painted on the side of the container at the back of the school and it is already looking really striking. If you have any spare paint (including spray paint) that would be suitable for using on this unique canvas, we would really appreciate any donations.

## **INSET Days – a reminder for next year**

To help you plan ahead, and just in case you missed them, here are the dates that school will be closed for training next year: 1st September, 2nd September, 2nd November, 4th January, 4th May

## **A message on behalf of Fraser at Courtside Tennis....**

Hey everyone

If you have a budding tennis enthusiast at home, then please consider our Monday morning club at the school.

There are plenty of spaces available for this session and it's a great way to start the week.

To register, please follow this link <https://tennishampshire.com/book/coaching/13140>

# THE OTTER

THE NEWSLETTER OF OTTERBOURNE CHURCH OF ENGLAND PRIMARY SCHOOL.



## May Fayre Reminders:

### A message from Nicky on behalf of the FOS...

*It's 5 days to go until the big event of the year!! 🐾*

*The inflatables are booked, the raffle prizes are rolling in, and Mr G is searching for a raincoat ready for a soaking!*

*Here's everything you need to be ready for the day:*

- *Please sign up on Classlist to volunteer on a stall if you haven't already and are able to help. We're still very short on volunteers and need your help to keep all the stalls running on the day.*

*Click her for [Volunteer Sign Up Sheets](#)*

- *Raffle ticket books have gone home in book bags, so please help to get those filled in and handed back to reception for a chance to win some amazing prizes.*
- *Why not dust off the baking tins and see if you can fool our May Fayre King and Queen in the 'Is It Cake?' competition!*
- *The weather forecast is looking sunny, so let's hope for another glorious May Fayre – please prepare for the warm weather!*

*We can't wait to see you on Saturday! FOS*

### Also...

Friday 15<sup>th</sup> May is a dress down in exchange for both bottles and sweets. Please can all children bring a **sealed packet of sweets and a bottle** of some kind which will go towards the Bottle Tombola and Sweet stall.

**Welcoming the May King and Queen:** Please help us to welcome the May King and Queen by making a human arch for them to walk through at 11:55am from the main entrance to the hall.

### "Is it Cake?" Competition – further information

We're really looking forward to our first ever "Is It Cake?" competition at the May Fayre which was designed by Community Council! Our May Fayre King and Queen will be judging which cakes are real and which are cleverly disguised duds. This is a fun competition for children; we are not looking for works of art so please join in and let your child get creative!

If you'd like to enter, please add your name on Classlist so we know whose cakes we're judging:

[Is It Cake? Entry Form](#)

Cakes need to be brought to the fayre ready for judging shortly before 12pm. We'd also love any extra cakes or baked goods you're happy to bring along for the cake stall. These don't need to be entered into the competition— just bring them with you on the day!

**MORE MAY FAYRE POSTERS ARE INCLUDED AT THE END OF THE NEWSLETTER.**

# THE OTTER

THE NEWSLETTER OF OTTERBOURNE CHURCH OF ENGLAND PRIMARY SCHOOL.



## Squirrel Class Worship in Church

On Friday 1<sup>st</sup> May, Squirrel Class delivered their class worship based on our current Christian Value of 'Trust'. They told the bible story of Noah's Ark and taught us how Noah had to trust in God's plan when he followed instructions and built the ark for all the animals. The children delivered the story with confidence and passion – well done Squirrel Class.



## Year 5/6 Evacuee Day

Last Friday, Year 5/6 children took part in Evacuee Day where they were immersed in experiences to help them imagine just what it would have been like to have lived as a child in World War II. The highlight of the day was the Evacuation Workshop which was led by Rainbow Theatre. This action-packed role play based experience allowed children to step onto the train into the countryside, be picked by host families in the village hall and take part in rural life before journeying back to the city in the middle of an air-raid. The children praised this workshop for showing, rather than telling them, what life was like to be an evacuee.

During this day, the children also participated in a range of 1940s games and enjoyed a plastic-free picnic lunch in the woods, eating only foods that were available in war time Britain. This experience will contribute to the children's English work where they are writing a magazine article as if it was October 1940, discussing the reasons for and against evacuation to help mothers decide what to do. They will also be creating a description of the Blitz and writing a letter home through the eyes of an evacuated child.



# THE OTTER

THE NEWSLETTER OF OTTERBOURNE CHURCH OF ENGLAND PRIMARY SCHOOL.



## More evacuee day photos....



## Year 3/4 Viking Day

On Thursday, children in Year 3/4 also stepped back in time and came face to face with the ferocious Vikings. They were plunged into every aspect of Viking history including who the Vikings were and where they came from, their weapons and battles, sagas and beliefs and the food which they ate. They worked collaboratively and learnt how to play Fox and Geese which is a Viking Strategy game. The day finished with a huge Saxon versus Viking battle which was extremely noisy but lots of fun!

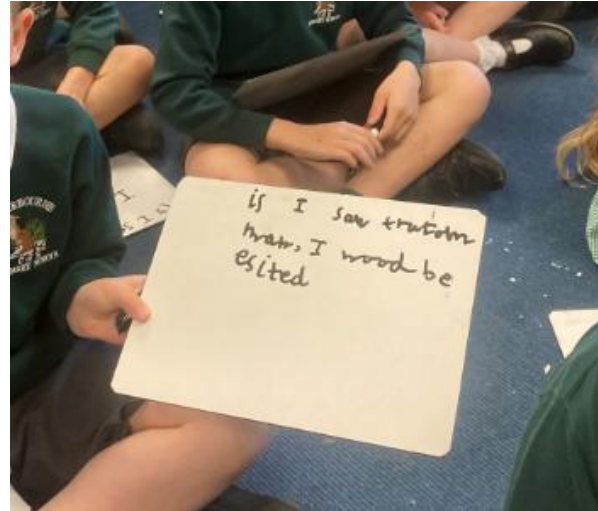


# THE OTTER

THE NEWSLETTER OF OTTERBOURNE CHURCH OF ENGLAND PRIMARY SCHOOL.



## LEARNING IN ACTION PHOTOS



Hedgehog Class have been learning how to write subordinate clauses based on their book Traction Man.



Children in Year 5/6 have been exploring St Matthew's graveyard as part of their local history study. They have been trying to determine the age of the church using primary evidence found on the gravestones. Before they went, they discussed how they could be respectful in this area. When they were there they also hunted for the graves of the local residents whom our school houses are named after.

# THE OTTER

THE NEWSLETTER OF OTTERBOURNE CHURCH OF ENGLAND PRIMARY SCHOOL.



This week Otters Class have been reading the story of the Three Little Pigs and exploring and retelling it through their play. There has been a Three Little Pigs building site in the outdoor provision and a three little pigs puppet show indoors. During their Forest School session they built their own houses of sticks and they have also been using art and other materials. Can you ask your child to retell the story of the Three Little Pigs to you at home?

# THE OTTER

THE NEWSLETTER OF OTTERBOURNE CHURCH OF ENGLAND PRIMARY SCHOOL.



Friends of Otterbourne School

## May Fayre

16th May 2026



**SWEETS & BOTTLES WANTED!**

BRING IN SEALED BAGS OF SWEETS  
AND BOTTLE DONATIONS FOR OUR  
TOMBOLAS AND ENJOY A DRESS  
DOWN DAY ON  
FRIDAY 15<sup>TH</sup> MAY

Please drop donations into school on the 15th

# THE OTTER

THE NEWSLETTER OF OTTERBOURNE CHURCH OF ENGLAND PRIMARY SCHOOL.



**Friends of Otterbourne School**

# May Fayre

16th May 2026

**JOIN US FOR AN AFTERNOON OF FUN**

**12:00 - May Fayre King and Queen open the event**

**12:15 Cake Competition Judging - Is It Cake??**

**12:30 - Maypole**

**1:00 - Drama Club Songs**

**1:30 - Choir**

**2:00 - Tug of War**

**2:30 - Dance Junkies**

**2:45 - Raffle Draw**

**3:00 - Soak the Headteacher**

# THE OTTER

THE NEWSLETTER OF OTTERBOURNE CHURCH OF ENGLAND PRIMARY SCHOOL.



Friends of Otterbourne School

## May Fayre

16th May 2026

### RAFFLE PRIZES

- \*Race Centre, Chandlers Ford - Open Team Endurance Meeting voucher for up to 5 people
- \*The White Horse - lunch for 2, up to £60
- \*The Otter Pub meal voucher
- \*Katie Beauty, Winchester - £35 treatment voucher
- \*Golden Gecko - £30 climbing voucher
- \*High Score Family Arcade gift card
- \*Premier Tennis - 5 x one day holiday camp passes
- \*The Charitable Baker - choose your own brownie voucher
- \*Utilita Cricket tickets
- \*Jude's Ice Cream - a delivery box of ice cream
- \*Flying Colours Tutoring voucher
- \*Barracudas - free holiday camp day pass
- \*Integr8 Dance - holiday camp day pass
- \*Romsey Rapids Family Golf Voucher
- \*Thrive & Wild soft play - family pass
- \*Waffles & Cream - £5 voucher & cup
- \*Build your own Hawksbill Turtle kit
- \*Bay Leaves Larder - coffee voucher
- \*R&R voucher

**PLEASE RETURN UNUSED RAFFLE TICKETS TO RECEPTION.**

# THE OTTER

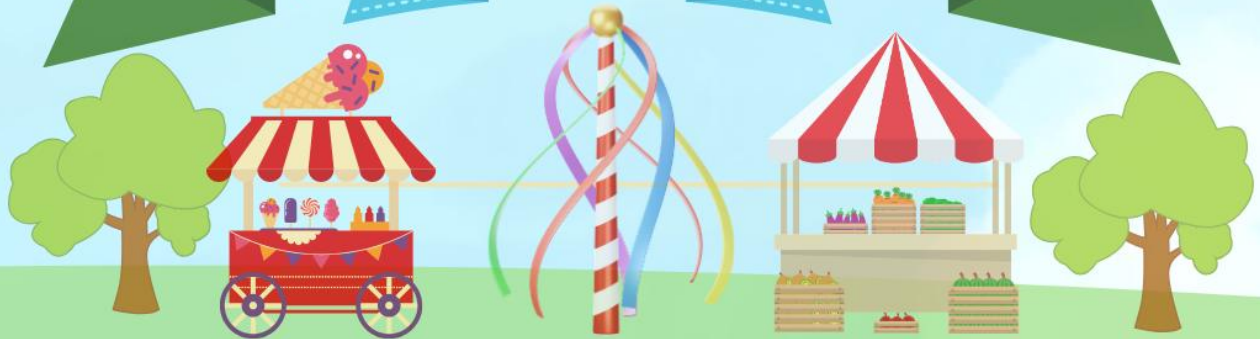
THE NEWSLETTER OF OTTERBOURNE CHURCH OF ENGLAND PRIMARY SCHOOL.



Friends of Otterbourne School

# May Fayre

16th May 2026



**VOLUNTEERS NEEDED**

**SIGN UP ON CLASSLIST HERE**



# THE OTTER

THE NEWSLETTER OF OTTERBOURNE CHURCH OF ENGLAND PRIMARY SCHOOL.



This year's theme has been chosen by Community Council!

## Is it Cake.?

Join our May Fayre Cake-Off!  
Bake a cake that doesn't look like a cake!  
Is it a shoe? Is it a brick?  
Is it a book? OR is it cake?!



Cakes to be ready by  
Saturday 16<sup>th</sup> May

## Additional Support Courses for Parents

Three new courses offered by FACE, separate from the school membership.

Full access to all three courses for £6.99/month

Complete at your own pace, cancel anytime.



### Building Emotional Resilience

Work through six stages of directed exercises to help your child (and yourself) improve emotional resilience.



### Facing Defiance

A specific strategy aimed at supporting parents of children aged 5 to 12 with ADHD, ODD or just very challenging behaviour.



### You & Your Teen

A skills building course for one parent and one teen (12 years old and above) to learn how they can both improve their communication with each other.

[www.facefamilyadvice.co.uk](http://www.facefamilyadvice.co.uk)

**Online Courses for Parents** page

[info@facefamilyadvice.co.uk](mailto:info@facefamilyadvice.co.uk)



# THE OTTER

THE NEWSLETTER OF OTTERBOURNE CHURCH OF ENGLAND PRIMARY SCHOOL.



Stubbington  
Study Centre



## STUBBINGTON STUDY CENTRE

Summer Day Camps

- Spend time in the outdoors.
- Try new activities and challenges.
- Explore new environments.
- Make new friends and memories.

# THE OTTER

THE NEWSLETTER OF OTTERBOURNE CHURCH OF ENGLAND PRIMARY SCHOOL.



## STUBBINGTON STUDY CENTRE SUMMER HOLIDAY ACTIVITIES

Open to years 3-6

Spend time in the outdoors trying new activities and challenges. Includes sandwich lunch and snacks. Early drop off available (with breakfast) at an extra charge.

27-31 July 2026

£36 PER DAY

3-7 August 2026

£165 A WEEK

10% sibling discount



Hampshire  
County Council

Stubbington  
Study Centre