

THE OTTER

THE NEWSLETTER OF OTTERBOURNE CHURCH OF ENGLAND PRIMARY SCHOOL.



Dear Families

We've seen a change in the weather this week and have been enjoying activity-filled lunchtimes in the sunshine. Please ensure that children are prepared for the weather, with a water bottle, sun hat, and suncream applied before school if you think it will be necessary. We can't apply suncream at school and sadly don't have any spare sun hats available. *I have heard that some companies offer these to local schools by way of promotional items however, and we would happily accept some if you work for any such company - thank you!* If the temperature starts to rise, we will put in shade breaks, water breaks and reduce the amount of exposure to the sun.

Just a reminder that we have different areas of the field allocated to different activities that support the development of different skills. One of these is the digging area, in which the children use a range of tools to dig, build and explore. If you don't want your child getting dusty, please talk to them about not being in this area, as we really don't mind a bit of mess when the children have played in this way.

I hope you are looking forward to a good bank holiday weekend. Mr Geraghty

[The May Fayre is almost here! PLEASE TAKE A LOOK AT THE POSTERS AT THE END OF THIS NEWSLETTER](#)

There are just two weeks to go before we have our annual main event – The May Fayre. Whether you are popping in, staying the day, or volunteering (*there are still spaces for people to help out if you would like to*), I really hope you enjoy everything on offer. My thanks have to, once again, go to Nicky, the team of volunteers, and the school staff who give up their time to make this a special occasion.

In school this week, we picked our May King and Queen and I am delighted to let you know that King Oscar of Year R and Queen Connie of the House of Kestrel will be opening the May Fayre for us at 12pm, following a short procession from The OWL – if you are onsite just before 12, please do join in by applauding and cheering our 'Royals' as they make their way in to the Fayre.

[May Fayre Update - A Message from FOS](#)

Timings

Saturday 16th May, 12:00pm – 3:00pm on the school field, playgrounds and in the hall.

Raffle

We have lots of exciting prizes (with more still being added!). Raffle ticket books will be coming home with children over the next week. Please complete as many tickets as you'd like and return them to reception in a sealed envelope with the correct money enclosed. Any unused tickets can also be returned so they can be reused. The raffle will be drawn at the May Fayre at 2:45pm.

Sweets & Bottle Tombolas

Our popular tombola stalls are back! We'd really appreciate each child bringing in:

- One bottle (e.g. shampoo, wine, squash, tomato sauce – any bottle is fine)
- One sealed bag of sweets

Please bring donations in on **Friday 15th May**. As a thank you, children can enjoy a dress-down day that day.

THE OTTER

THE NEWSLETTER OF OTTERBOURNE CHURCH OF ENGLAND PRIMARY SCHOOL.



“Is it Cake?”

We're excited to introduce this new activity! Mrs Simpson will be hosting a mini version of the popular TV show, where our May Fayre King and Queen will decide which creations are real cakes and which are cleverly disguised “fakes”. Judging will begin shortly after 12:00pm, so please bring entries to the judging table in time.

Volunteers Needed

We say it every year, but we truly can't run this event without your help. If you're able to volunteer, please sign up via Classlist or the sign-up sheet on the school gate. This is our biggest fundraiser of the year, and any time you can give will make a huge difference – especially if you're new to volunteering.

Mission of the Month

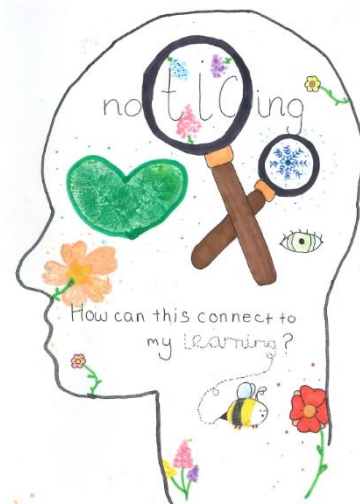
For the month of May, our Positive Learning Power for our “Mission of the Month” is ‘Noticing’. This learning power allows us to explore how if we take time to really look, we will notice the small details that help us to make sense of our world. Each month, our Learning Council create child-friendly wording to help support everyone's understanding of this month's mission. This month's image was created by Isabella and Frankie.

KS1 Noticing:

Looking closer to spot details that others might miss.



KS2 Noticing: Looking in a different way to observe tiny details that help you understand the bigger picture.



Each month, our Mission of The Month Award winners get a certificate to take home. This month, we will be linking the learning power of ‘noticing’ to our learning about David Attenborough (see below) and giving the children a certificate specifically designed around this.

David Attenborough Day – 8th May

Hopefully, you have all seen the letter that was sent on Monday with details of this very exciting day in school. Please send in your child's item, which should link to an animal or plant from one of the biomes (water, grassland, ice, trees or desert), with the completed coloured card attached to it on the 8th May.

All items will be returned. Thank you to Mrs Simmons and Mrs Simpson for planning this day together.

David Attenborough Day
Menu
Friday 8th May

Fish and Chips Tray
Battered Fish served with Chips, Peas & Tomato Ketchup

Cheese and Tomato Pinwheel Tray
Cheese and Tomato Pinwheel served with Potato Wedges and Peas.
A selection of fresh salad bar and homemade bread will be available

Cold Pasta
Pasta with Tomato and Basil Sauce

Sandwiches
Choose from Ham, Cheese, or Tuna

Ice Lollies

THE OTTER

THE NEWSLETTER OF OTTERBOURNE CHURCH OF ENGLAND PRIMARY SCHOOL.



Thank you

Thank you so much to Mrs Whitty for her kind donation of spades for our digging area. The children were delighted and this has really enhanced the play in this area.



Otterbourne's Got Talent

We were fully entertained last Friday during OGT with a range of acts from across the school. The show included musical introductions and finales from pianists and violinists and our entertainers, Over the Top Ant and Dramatic Dec introduced every act to us with confidence and a lovely touch of comedy.



School Shoes and Socks – a reminder about school uniform

We are starting to see an increasing number of trainers and sports socks with logos being worn in school. Plain black trainers are suitable to wear in school but they should not contain any colour, pattern or stripes and socks should be plain black, white or grey. Please help us to maintain our high standards of uniform by replacing out-grown school shoes with replacement black shoes or black-only trainers that resemble shoes.

The school uniform is one way that we encourage children to have a sense of belonging, which is a valuable and important part of school life. If you need to discuss any aspect of this, please contact the school.



Plain black trainers are permitted



Trainers with colour or patterns are only allowed in PE lessons.

THE OTTER

THE NEWSLETTER OF OTTERBOURNE CHURCH OF ENGLAND PRIMARY SCHOOL.



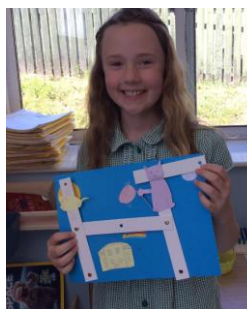
LEARNING IN ACTION PHOTOS



Hedgehog Class have developed their programming skills from Beebots to coding using Scratch.



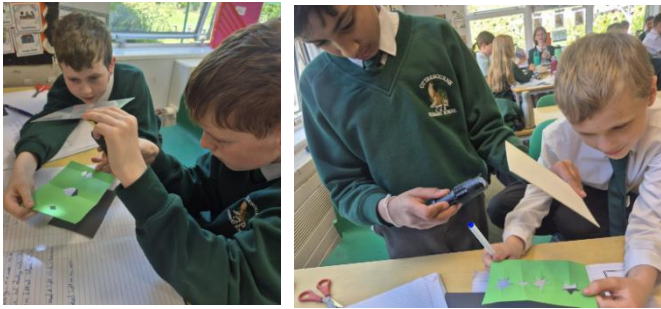
Year 6 have been completing a maths trail to help them spot and fix errors in arithmetic papers.



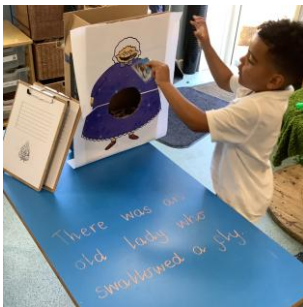
Robins class have completed their moving pictures in DT.

THE OTTER

THE NEWSLETTER OF OTTERBOURNE CHURCH OF ENGLAND PRIMARY SCHOOL.



Buzzard class have been investigating how light travels in science



This week Otters class have been learning lots of nursery rhymes including 'There was an old lady who swallowed a fly', 'Humpty Dumpty Sat on a Wall' and 'I'm a little teapot'. The children have been making walls for Humpty out of playdough and experimenting with making cups of tea with tea bags in their sensory tray.

Can your child sing some of the nursery rhymes they've learnt this week to you at home?



Year 5/6 children represented the school at St Cross cricket club this week and played 5 matches against other local schools. They showed lots of support and encouragement to each other and represented the school brilliantly.

THE OTTER

THE NEWSLETTER OF OTTERBOURNE CHURCH OF ENGLAND PRIMARY SCHOOL.



Friends of Otterbourne School

May Fayre

16th May 2026



SWEETS & BOTTLES WANTED!

BRING IN SEALED BAGS OF SWEETS
AND BOTTLE DONATIONS FOR OUR
TOMBOLAS AND ENJOY A DRESS

DOWN DAY ON
FRIDAY 15TH MAY

Please drop donations into school on the 15th

THE OTTER

THE NEWSLETTER OF OTTERBOURNE CHURCH OF ENGLAND PRIMARY SCHOOL.



Friends of Otterbourne School

May Fayre

16th May 2026

JOIN US FOR AN AFTERNOON OF FUN

12:00 - May Fayre King and Queen open the event

12:15 Cake Competition Judging - Is It Cake??

12:30 - Maypole

1:00 - Drama Club Songs

1:30 - Choir

2:00 - Tug of War

2:30 - Dance Junkies

2:45 - Raffle Draw

3:00 - Soak the Headteacher

THE OTTER

THE NEWSLETTER OF OTTERBOURNE CHURCH OF ENGLAND PRIMARY SCHOOL.



Friends of Otterbourne School

May Fayre

16th May 2026

RAFFLE PRIZES SO FAR...

- *Race Centre, Chandlers Ford - Open Team Endurance Meeting voucher for up to 5 people
- *The Otter Pub meal voucher
- *Katie Beauty, Winchester - £35 treatment voucher
- *Golden Gecko - £30 climbing voucher
- *High Score Family Arcade gift card
- *Premier Tennis - 5 x one day holiday camp passes
- *The Charitable Baker - choose your own brownie voucher
- *Utilita Cricket tickets
- *Flying Colours Tutoring voucher
- *Barracudas - free holiday camp day pass
- *Integr8 Dance - holiday camp day pass
- *Romsey Rapids Swimming passes
- *Thrive & Wild soft play - family pass
- *Waffles & Cream - £5 voucher & cup
- *Build your own Hawksbill Turtle kit
- *Bay Leaves Larder - coffee voucher

RAFFLE TICKET BOOKS WILL COME HOME WITH THE CHILDREN OVER THE NEXT WEEK. PLEASE GIVE ANY UNUSED TICKETS BACK TO RECEPTION.

THE OTTER

THE NEWSLETTER OF OTTERBOURNE CHURCH OF ENGLAND PRIMARY SCHOOL.



Friends of Otterbourne School

May Fayre

16th May 2026



VOLUNTEERS NEEDED

SIGN UP ON CLASSLIST HERE



THE OTTER

THE NEWSLETTER OF OTTERBOURNE CHURCH OF ENGLAND PRIMARY SCHOOL.



KINGFISHERS Colden Common Preschool

Nurturing young minds to soar and explore



Open Day
Saturday 16th May
10am - 1pm
Colden Common Community Centre
SO21 1UU

Come along and discover what makes Kingfishers such a special place for little learners...

- ✿ Meet our friendly, passionate team
- ✿ Explore our vibrant learning environment
- ✿ Hear from current families about why they love Kingfishers
- ✿ Enjoy hands-on activities with your little ones
- ✿ Find out about our unique Allotment School, led by our qualified Forest School team
- ✿ Ask as many questions as you like!



We offer:

- ✓ Places from 2 years old
- ✓ Term-time only sessions
- ✓ Funded hours accepted
- ✓ Opening hours: 8.30am – 3.00pm



Please email: hello@kingfishersps.co.uk to book your place.